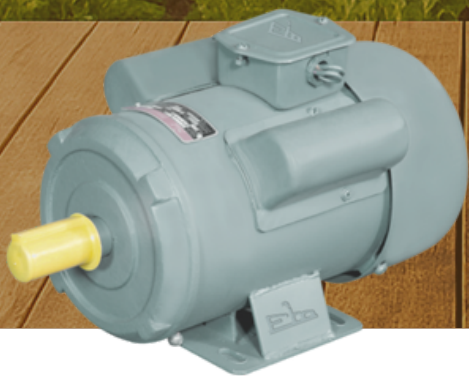


Fieldmarshal

SHRIDEV 



Reliable Motion, Unmatched Efficiency

**INDUCTION MOTOR
LEAFLET**

INDUCTION MOTOR

technical data

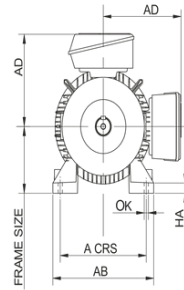
Technical Feature	Value
Frame Size	71 to 160
Power Range	0.5 TO 20 HP
No. of Poles	2P, 4P
Degree of Protection	IP55 as per IS:4691
Voltage	230V, 415V ±10% be offered on request*
Frequency	50 Hz
Ambient Conditions	50°C, Altitude ≤1000m
Insulation Class	Class F, with temperature rise limited to Class B
Bearing System	Ball bearings with C3 clearance
Lubrication System	Sealed bearings
Duty	Continuous S1

THREE PHASE 415 VOLT 50Hz											
KW	HP	POLES	FL RPM	FLC AMPS	EFFICIENCY		POWER FACTOR		DOL STARTING		
					FL	1/2FL	FL	1/2FL	STARTING TORQUE % FLT	STARTING CURRENT % FLC	
0.37	0.5	4	1390	1.1	80	75	0.75	0.62	200	500	
0.5	0.75	4	1390	1.26	80.6	75.06	0.75	0.63	200	500	
0.75	1	4	1390	1.67	82.4	77	0.81	0.65	220	500	
1.5	2	4	1410	3.11	85.1	80	0.82	0.71	250	600	
2.2	3	4	1410	4.37	86.6	81	0.82	0.71	250	600	
3.7	5	4	1435	7.67	88.5	82	0.82	0.72	220	700	
5.5	7.5	4	1446	10.3	89.3	83	0.83	0.72	250	700	
7.5	10	4	1440	13.8	90.2	86	0.84	0.72	250	700	
10	15	4	1440	21	89	89.9	0.9	0.76	300	850	
15	20	4	1440	28	90	89	0.92	0.82	370	950	

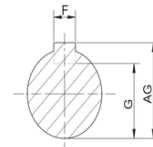
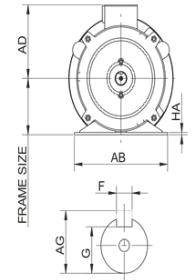
SINGLE PHASE 230 VOLT 50Hz											
KW	HP	POLES	FL RPM	FLC AMPS	EFFICIENCY		POWER FACTOR		DOL STARTING		
					FL	1/2FL	FL	1/2FL	STARTING TORQUE % FLT	STARTING CURRENT % FLC	
0.75	1	4	1440	6	69.9	65	0.7	0.69	200	500	
1.5	2.00	4	1440	9.4	70	65	0.72	0.7	200	500	
2.2	3.00	4	1440	12.5	72	68	0.8	0.78	220	500	
3.7	5.00	4	1440	22	74	69	0.8	0.79	250	500	
1.5	2.0(VB)	2	2880	12	82.4	77	0.81	0.65	220	500	
2.2	3.0(VB)	2	2880	17	86.6	81	0.82	0.71	250	600	

Frame Size	KW	HP	Body	kgs	C	D	E	F	G	GA	ØK	A	B	HA	AB	BB	ØAC	L	AD
71	0.25/0.37	0.33/0.5	CI	9	60	16	40	5	13	19	9	96	79	11	140	113	140	270	110
80	0.55/0.75	0.75/1	CI	12	64	23.5	55	7	19	25	9	152	86	14	190	124	202	340	120
90L	1.5	2	CI	28.7	96	28	60	8	24	30	9	153	88	12	190	125	200	370	130
100L	2.2	3	CI	37.3	63	28	60	8	24	31	11	158	115	14	198	145	199	365	140
112M	3.7	5	CI	42.9	75	28	60	8	23	31	11	185	140	18	230	190	224	420	152
132S	5.5	7.5	CI	70.7	96	38	80	10	33	41	11	197	158	20	250	220	262	510	180
132M	7.5	10	CI	75.5	100	38	80	10	33	41	11	197	159	21	250	212	269	510	180
160M	12	15	CI	122	108	42	110	12	37	45	15	254	210	18	306	260	202	597	195
160L	15	20	CI	135	108	42	110	12	37	45	15	254	210	18	306	260	202	537	195
90	1.5	2	Sheet Body	26	80	28	62	8	24	31	10	150	105	4	195	135	185	390	130
100	2.2	3	Sheet Body	31.5	80	28	65	8	24	31	12	160	105	4	200	140	190	420	140

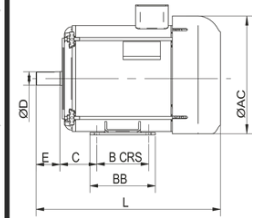
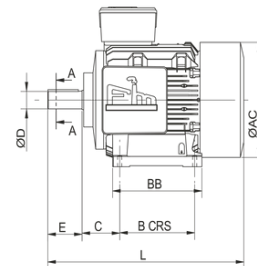
C.I. BODY



SHEET METAL BODY



SECTION A-A



Manufacturer & Exporter : AN ISO 9001:2015 Certified Company

P. M. DIESELS PVT. LTD.

P. B. No. : 1003, Aji Industrial Estate, RAJKOT - 360 003 - Gujarat (INDIA)

Whatsapp Business No. : +91 90235 50564 CIN : U29195GJ1980PTC003918

E-mail : contactus@fieldmarshal.com Web : www.fieldmarshal.com

Follow us at : [f](#) [in](#) [t](#) [@](#) [v](#) Fieldmarshal-PMDL Mob. No. : +91 91068 82861

As continuous improvements are contemplated the illustration and description are not binding
(This artistic / literary work is in the sole ownership of P. M. Diesels Pvt. Ltd. infringement / Un authorised copying of this artistic work is an offence under the provisions of Copy Right Act. 1957)